

Therapeutic Use Exemption



Hong Kong Anti-Doping Committee
香港運動禁藥委員會

What?



TUE gives an athlete an exemption to take the medication which is prohibited in sport to treat a medical condition.



Check the prohibition status of your medication registered in HK on **DrugInSport**.

Criteria for granting a TUE

01

Needed to treat a diagnosed medical condition

02

Does not enhance performance

03

No reasonable, permitted, alternative treatments available

04

The need to use is not due to the prior use of the substance / method without a valid TUE

Who & Where?



International-level Athletes

Apply to your IF in advance



National-level Athletes

Apply to HKADC in advance



TUE granted by HKADC is valid at national level only.



Other Athletes

May apply for a retroactive TUE



Always have a medical file prepared and ready to submit for evaluation after being tested.



Check with HKADC if you are not sure where to apply.

When?

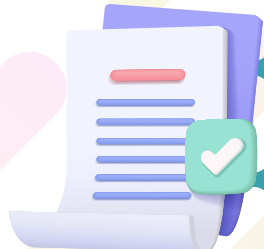


As soon as the need arises

At least 30 days before the TUE is required (e.g. participating in a competition)

How?

Submit the following documents:



TUE Application Form completed by the athlete and the doctor

Comprehensive medical history, laboratory results, examination reports, etc.



TUE Committee would consider whether the application meets the criteria for granting a TUE.



Reminder

- Specify a TUE has been granted and declare the medication on the Doping Control Form when getting tested
- Always keep a copy of the TUE certificate with you
- Each TUE has an expiration date. Submit at least 30 days before expiry if you need to continue to use the medication



Using a prohibited substance / prohibited method without a TUE could result in an Anti-Doping Rule Violation.